



Smart Home System App User Guide – Android Version

Smart Home System User Guide – Android Version

Chapter 1 Get started	P.3
-	
Chapter 2 Mobile App installation	P.4 - P.8
Chapter 3 Register an account	P.9 - P.15
Chapter 4 Login and key interfaces introduction	
4.1 Main interface	P.16
4.2 Comfort interface	P.17
4.3 Automation interface	P.18
4.4 Security interface	P.19
4.5 Video interface	P.20
4.6 Setting interface	P.21
Chapter 5 Other Functions	
5.1 Upgrade gateway firmware and app	P.22 - P.23
5.2 Change time zone	P.24
5.3 Privacy Policy	P.25

Chapter 1 Get started

To get started, you will need:

1. A Wi-Fi router that connects to the Internet, and know the SSID and password of this router
2. A SEG-X3 gateway
3. An Android phone

Follow these 2 steps to get started:

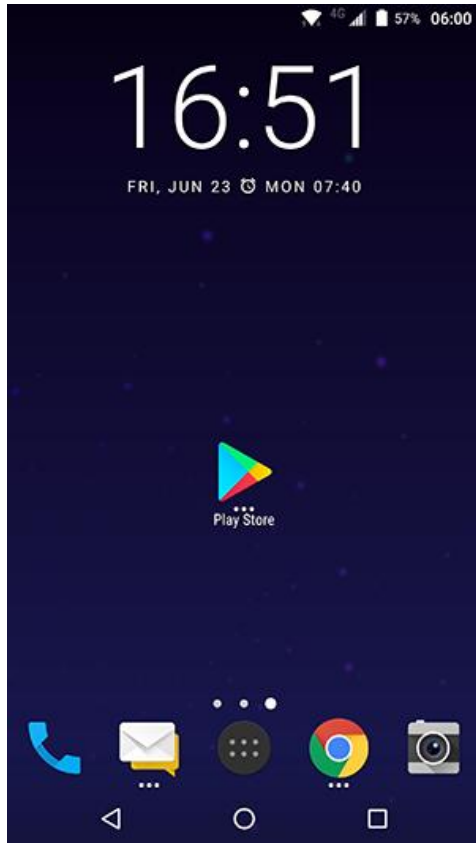
1. Plug in your SEG-X3 gateway. Turn it on and wait for the LED light to start flashing purple (This means the gateway is in AP mode)
2. Turn on Wi-Fi on your Android phone and connect to the Wi-Fi of the router

Tips: If the gateway LED indicator light is not in purple flashing status, please reset it to factory settings follow the user guide of the gateway SEG-X3.

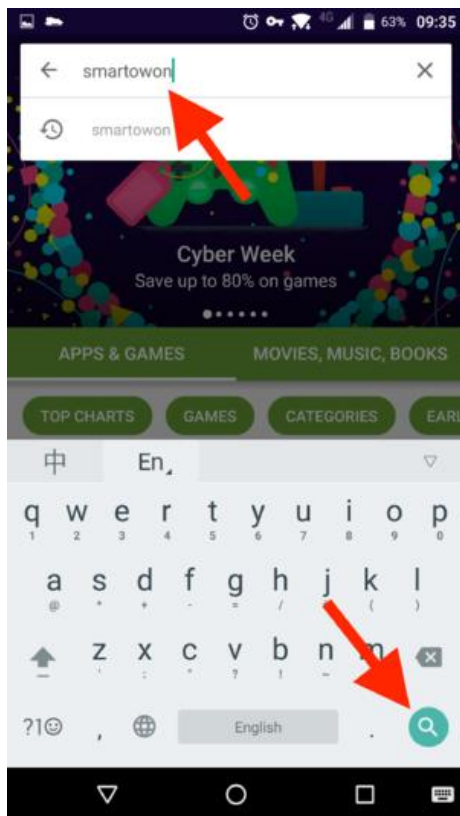
Chapter 2 Mobile App installation

Search "SmartOWON" on the Google play, and install it. See below for detailed steps:

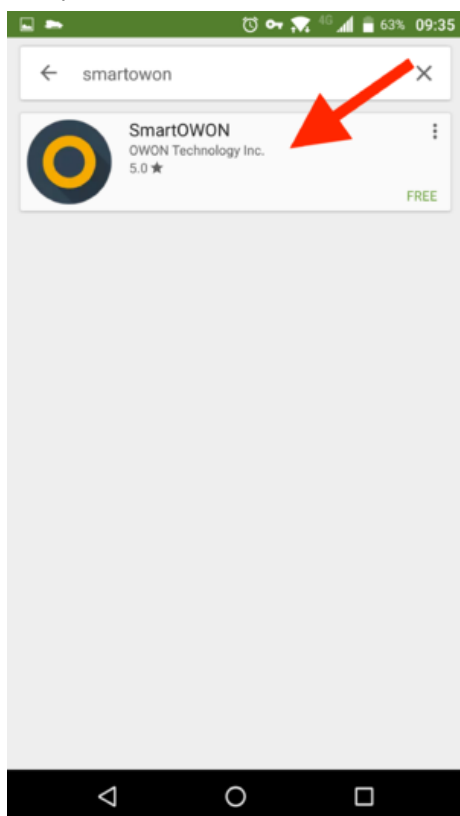
1. Tap "Play store" icon to enter Google Play



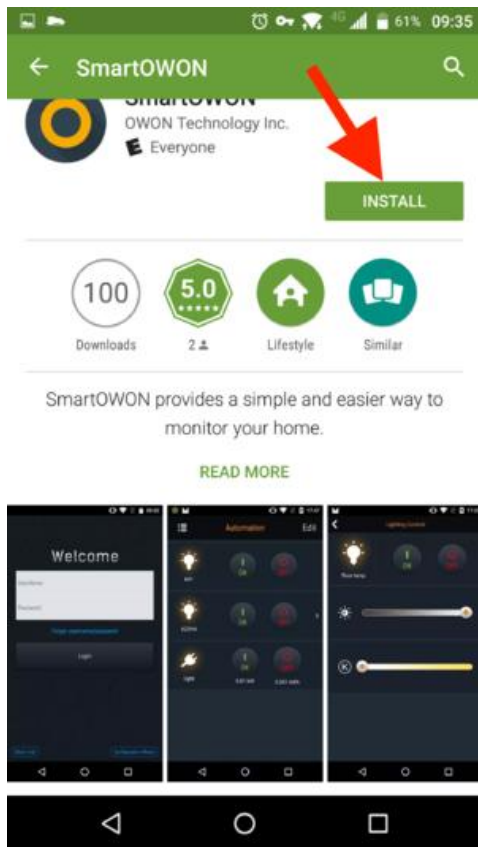
2. Type "SmartOWON" (capitalization is not important) into the search bar at the top and press the search icon



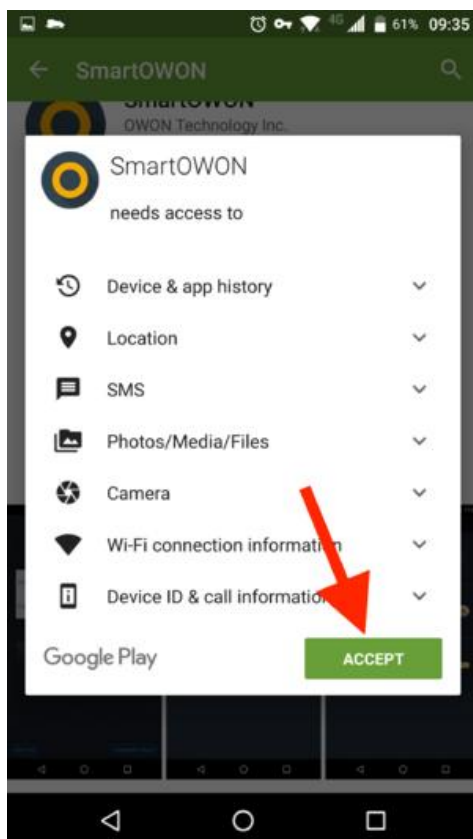
3. Tap the "SmartOWON" icon to enter the install page



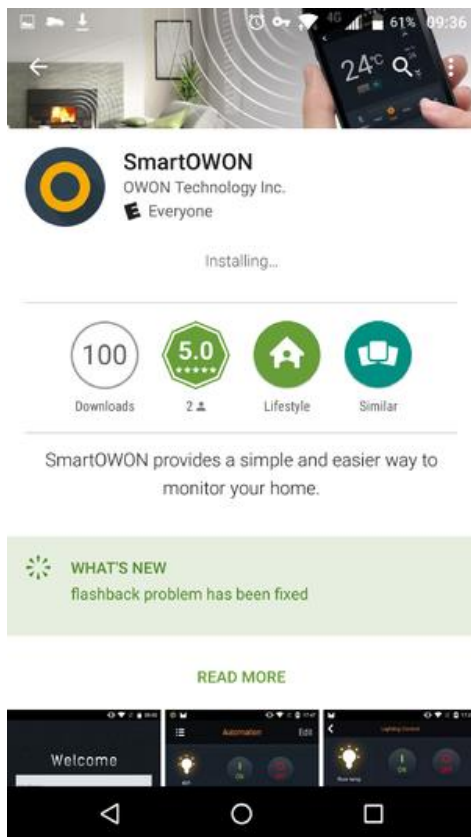
4. Tap "INSTALL" to start the installation of the app



5. Tap "ACCEPT" to allow access to all items while using this app



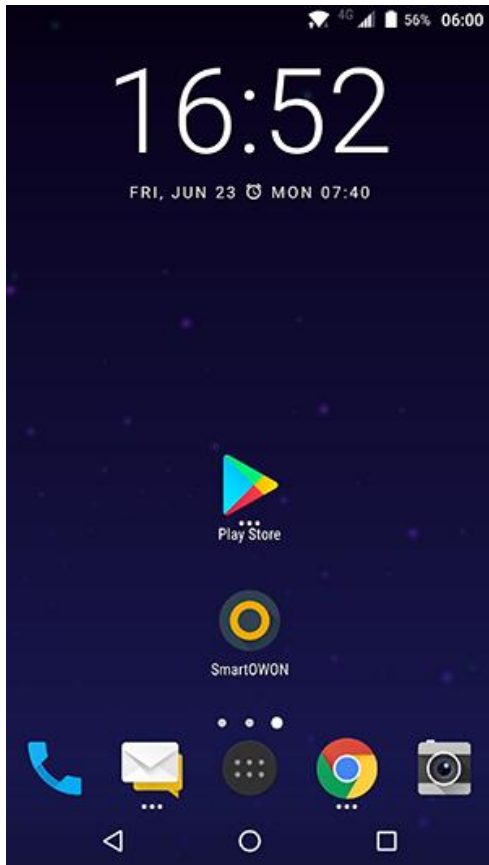
6. Installing, please wait.



7. When installation is finished, Tap "OPEN" to open the app



Tip: you could also return to the home screen to open the "SmartOWON" app.

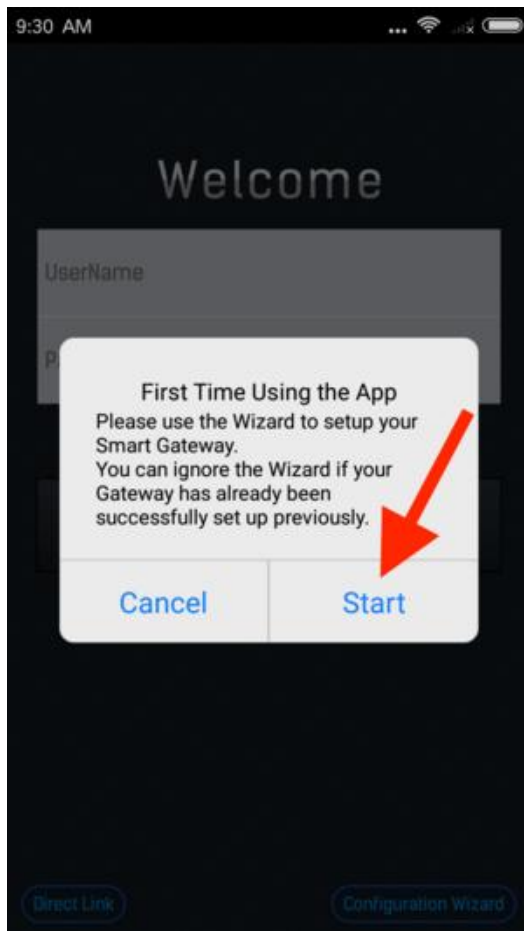


Chapter 3 Register an account

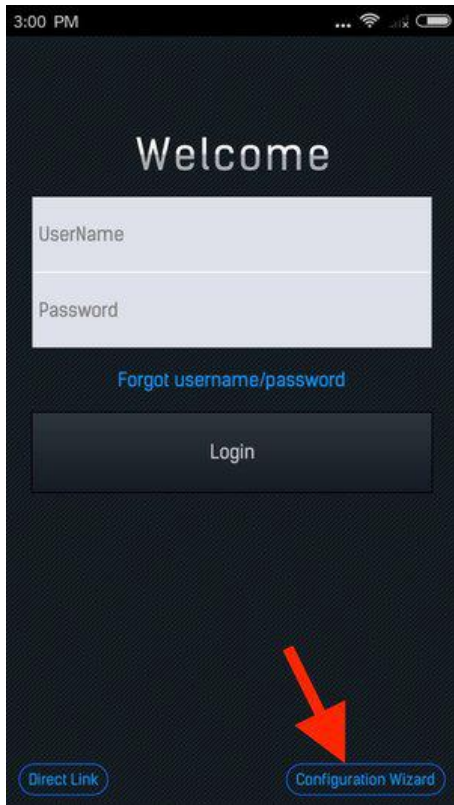
You will need to register an account to control your system.

See below detailed steps:

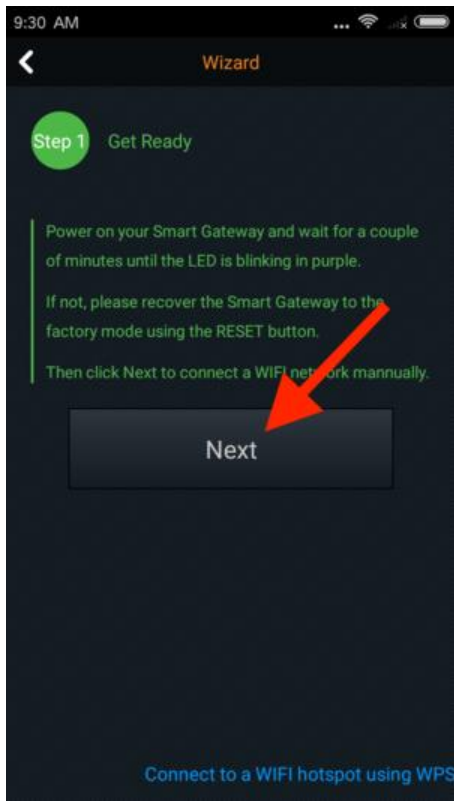
1. After you install the mobile app, open the mobile app, and tap "Start"



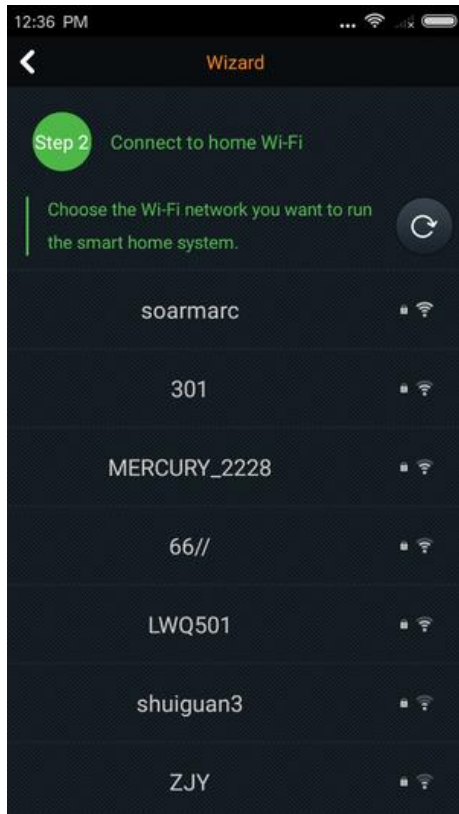
Tip: If you did not see the popup, just tap the "Configuration Wizard" in the bottom right corner.



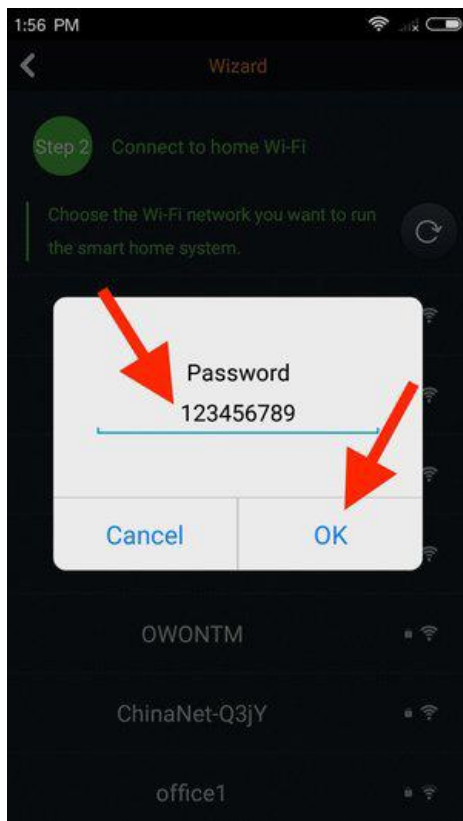
2. Tap "next"



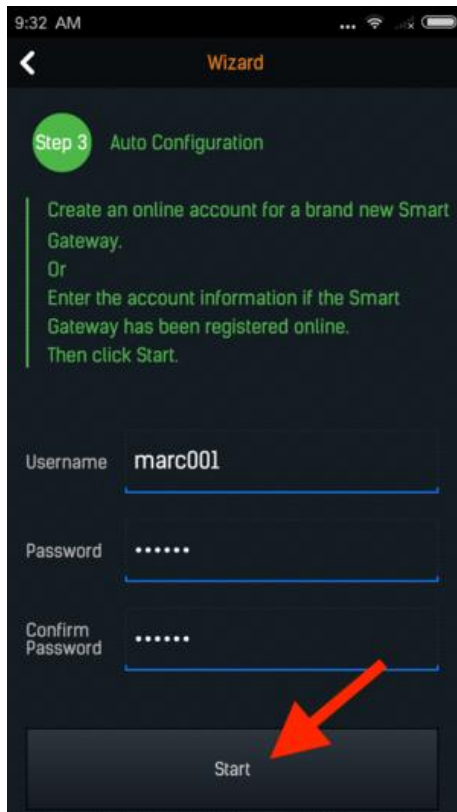
3. Choose your home Wi-Fi SSID



4. Enter the password of your Wi-Fi, and tap "OK"



5. After connecting your Wi-Fi successfully, enter the username and the password you require, then tap "Start."

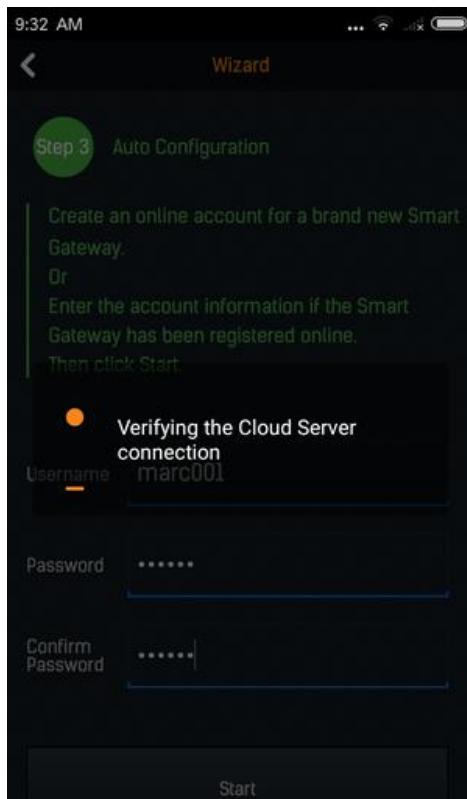


Tip: if you have ever registered an account before, it will prompt that this gateway has been associated with an existing account that you could use to login directly.

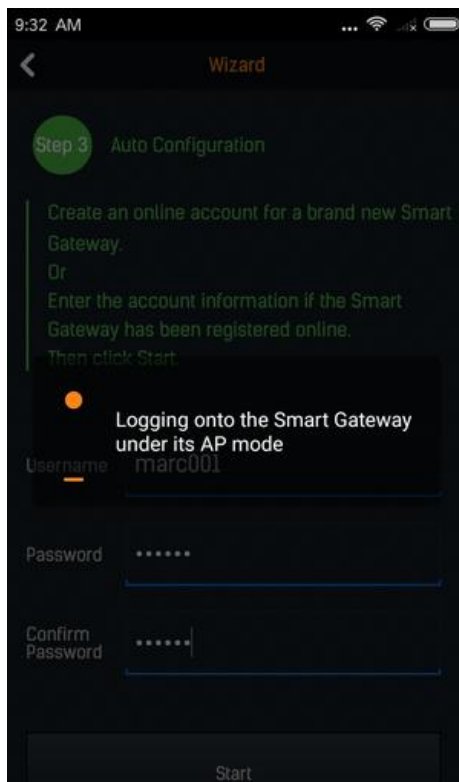
6. Then you will see below interfaces

Note: you don't need to do anything in this process

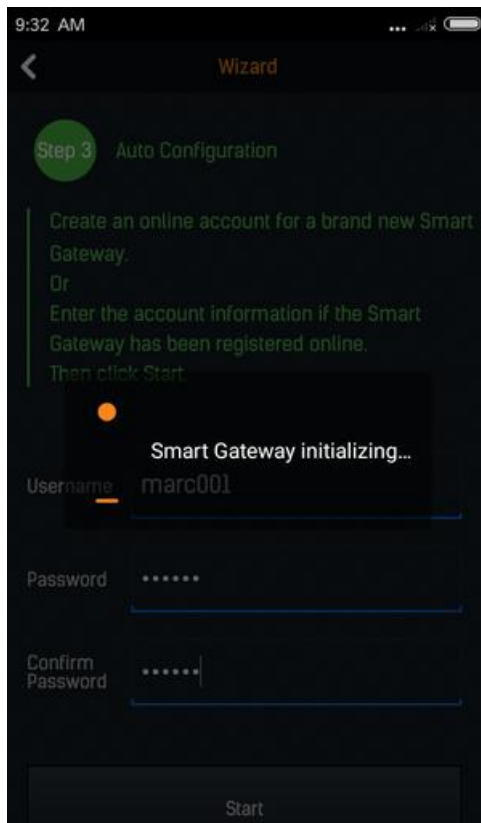
> Verifying the cloud server connection



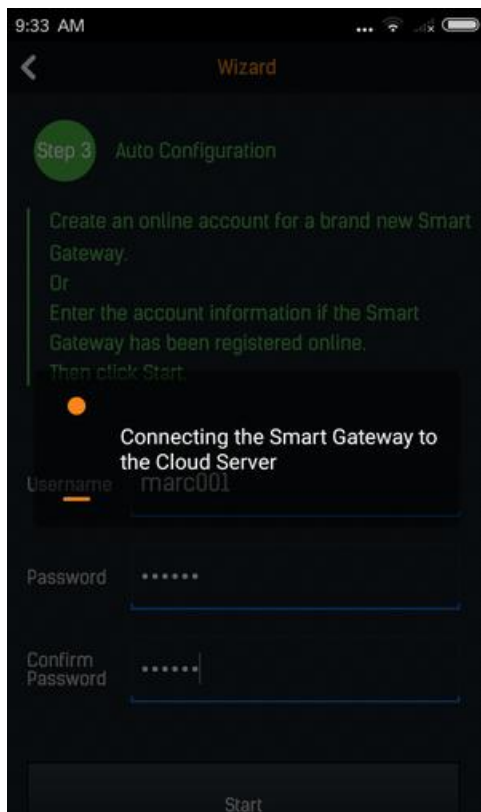
> Logging onto the smart gateway



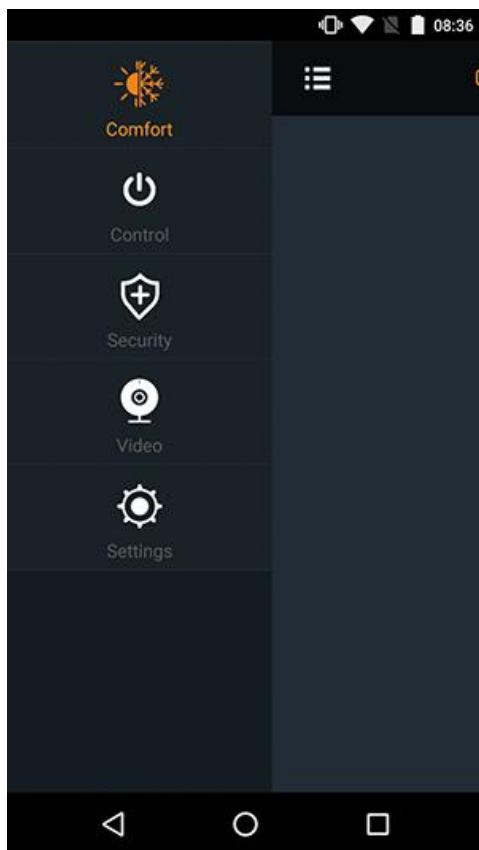
> Smart gateway initializing



> Connecting the smart gateway to the cloud server



7. When complete, you will login automatically

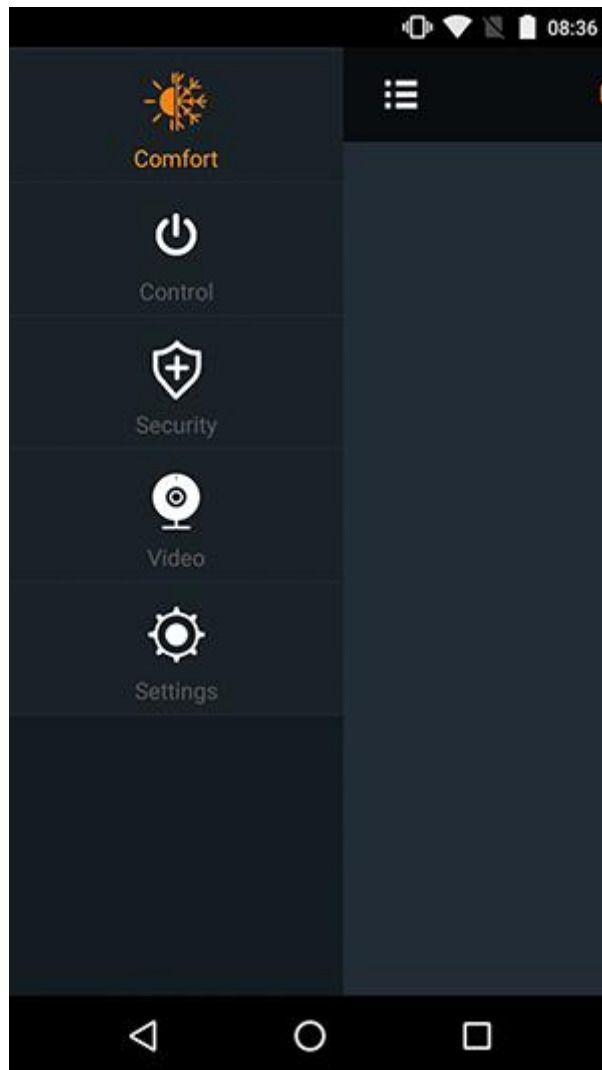


Chapter 4 Login and key interfaces introduction

Note: On the first time you login to the system, since there are no devices already added into the system, there will be no devices shown on the interfaces.

4.1 Main interface

Comfort, Automation, Security, Video, and Settings will be shown as below:



4.2 Comfort interface

Thermostats, air conditioners, temperature and humidity sensors, etc. will be shown in this interface. The App interface will be as below:



4.3 Automation interface

Smart plugs, power relays, light LED bulbs, etc. will be shown on this interface. The App interface will be as below:



4.4 Security interface

All security sensors including door/windows sensors, PIR (motion sensors), smoke detector sensors, etc. will be shown on this interface. The App interface will be as below:



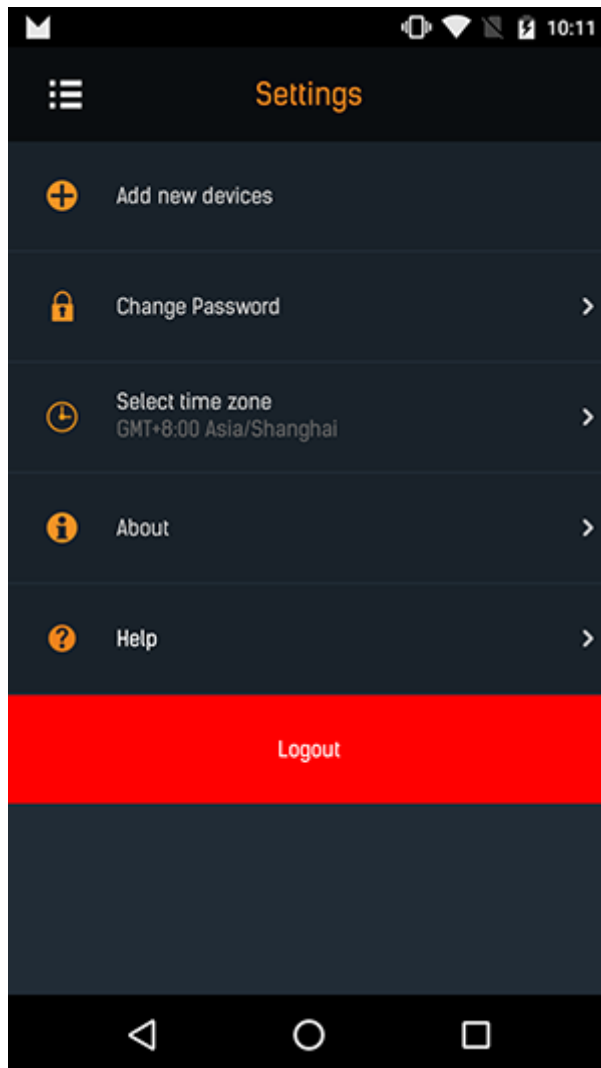
4.5 Video interface

The gateway can support up to 4 cameras, which are shown in this interface.



4.6 Settings interface

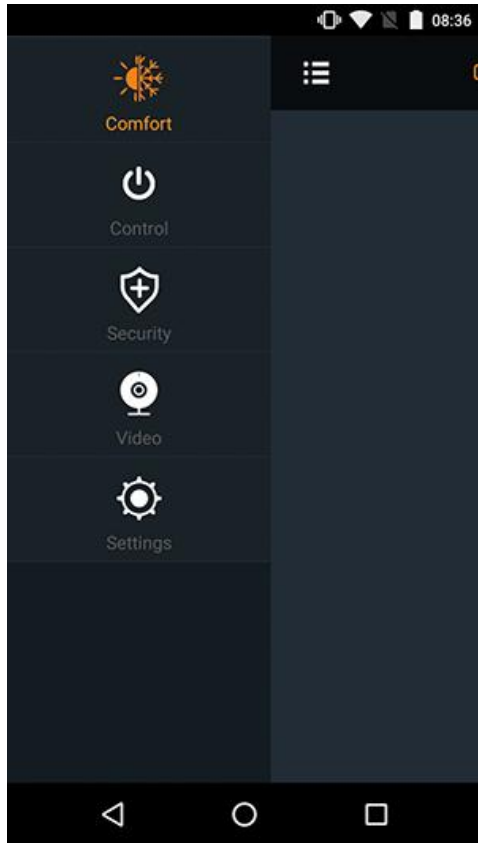
You will be able to set "Add new devices", change password, select timezone, update the firmware via the "About" interface as well as logout. The App interface will be as below:



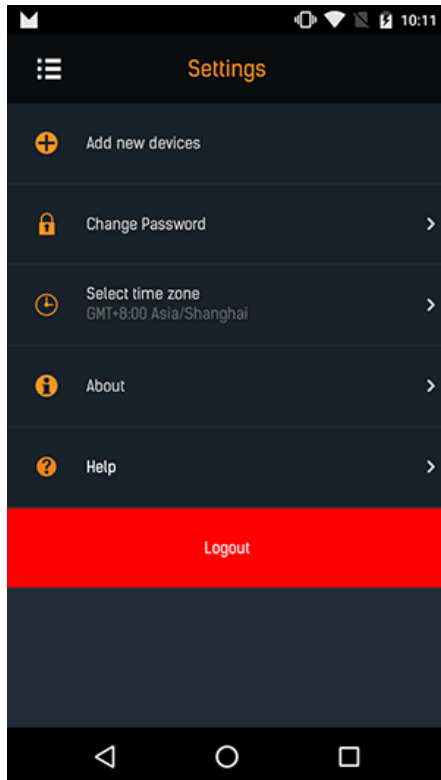
Chapter 5 Other Functions

5.1 Upgrade gateway firmware and app

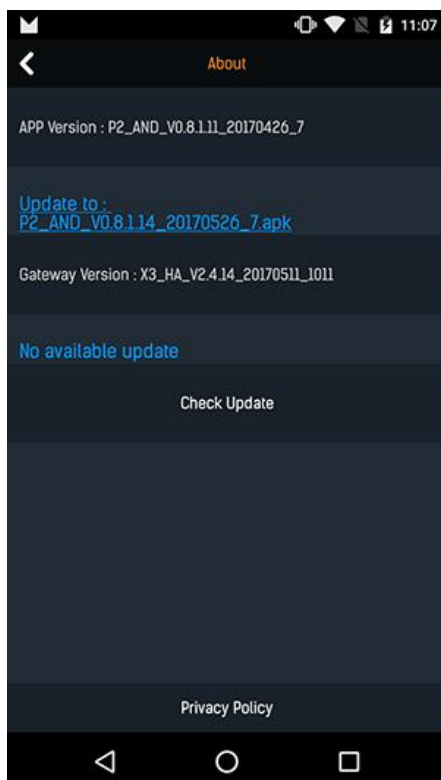
Step 1: Tap "Settings"



Step 2: Tap "About"

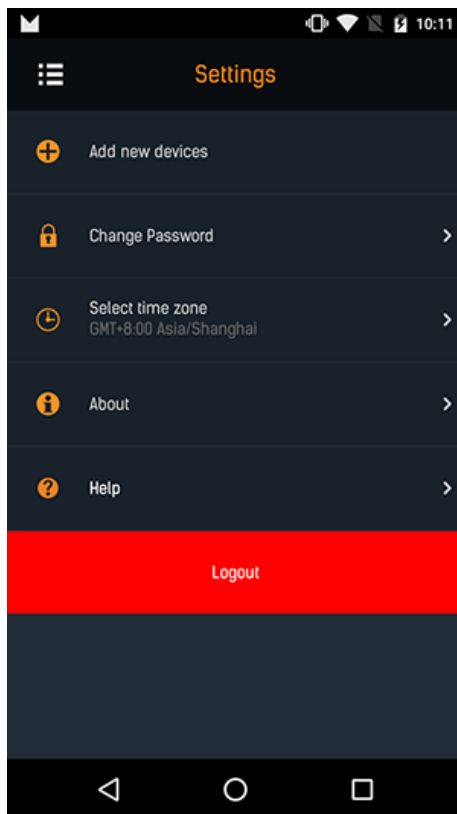


Step 3: Tap "Check Update" to see if there is an available update app and gateway firmware, if so, tap the corresponding link to download and update

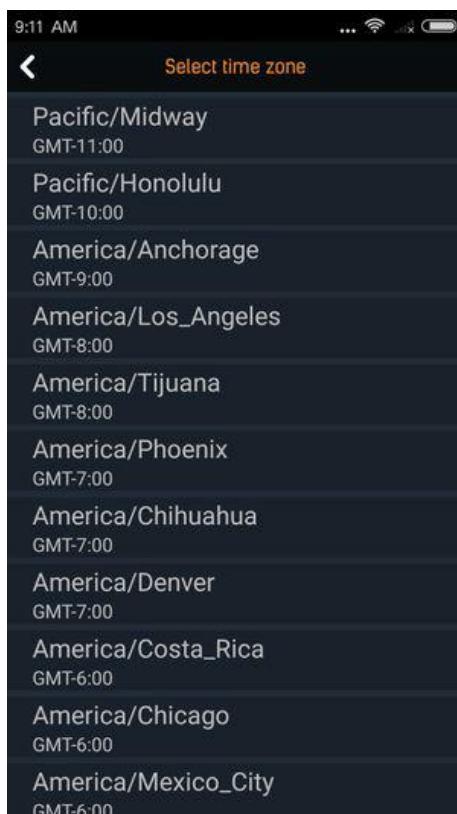


5.2 Change time zone

Step 1: Tap "Select time zone"



Step 2: Select your timezone and it will save



5.3 Privacy Policy

Tap "About"

